

Process for Placing WEPL Teams following the Restructure at the End of the 2015 Season.

It has been agreed that following the 2015 season, club cricket in Gloucestershire, Somerset and Wiltshire will be restructured. This restructure will reduce WEPL from containing a 1st XI structure consisting of 80 teams, and a parallel 2nd XI structure consisting of 70 teams, to a single combined structure consisting of 70 teams, with the remaining 80 teams being returned to the feeder leagues. The new structure is shown in figure 1.

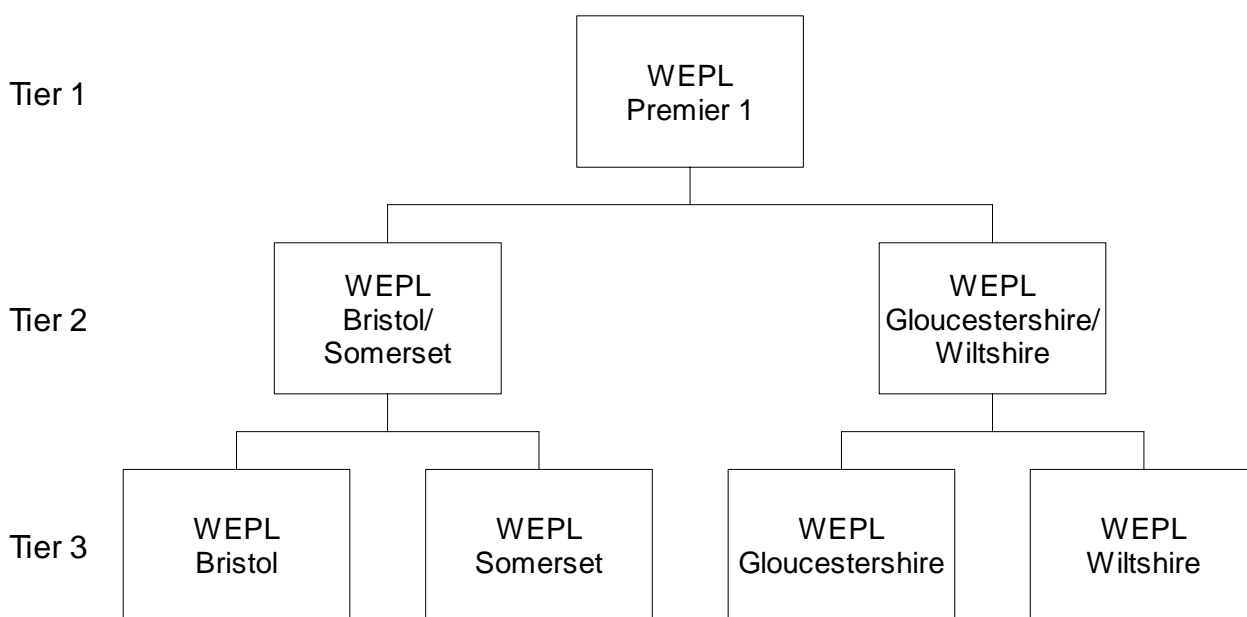


Figure 1 – The structure of WEPL from 2016.

This document presents the method which will be used by WEPL for placing teams into the new structure prior to the 2016 season.

1. Placing of 2nd XI's

The top four 2nd XI's in WEPL 2nd XI Premier 1 at the end of 2015 will be placed in the Tier 3 divisions of WEPL for 2016. Teams will be placed in divisions based on geography, so it may be that one team goes into each Tier 3 division, or all four teams go into the same Tier 3 division, depending on which teams finish in the top four places in WEPL 2nd XI Premier 1 at the end of 2015.

All other WEPL 2nd XI's will be returned to their feeder league. The division of the feeder league they play in will depend on their tier at the end of 2015 **after** promotion and relegation has been applied. Therefore:

- The teams finishing in 5th – 8th in WEPL 2nd XI Tier 1, and in 1st and 2nd in WEPL 2nd XI Tier 2, will return to the feeder leagues as tier 1 teams.
- The teams finishing in 9th and 10th in WEPL 2nd XI Tier 1, 3rd – 8th in WEPL 2nd XI Tier 2, and in 1st in WEPL 2nd XI Tier 3, will return to the feeder leagues as Tier 2 teams.
- The teams finishing in 9th and 10th in WEPL 2nd XI Tier 2, 2nd – 8th in WEPL 2nd XI Tier 3, and in 1st in WEPL 2nd XI Tier 4, will return to the feeder leagues as Tier 3 teams.

- The teams finishing in 9th and 10th in WEPL 2nd XI Tier 3, and 2nd – 10th in WEPL 2nd XI Tier 4, will return to the feeder leagues as Tier 4 teams.

The method used for placing teams returning to each feeder league from each tier is the subject of a document which is available from each feeder league.

2. Placing of 1st XI Tier 1 teams

The top 8 teams in WEPL Premier 1 at the end of 2015 will be placed in WEPL Premier 1 for 2016.

The 9th and 10th placed teams in WEPL Premier 1 at the end of 2015 will be placed in the appropriate division in Tier 2 for 2016.

3. Placing of 1st XI Tier 2 teams

The 1st and 2nd placed teams in WEPL Premier 2 at the end of 2015 will be placed in WEPL Premier 1 for 2016.

The 3rd – 9th placed teams in WEPL Premier 2 at the end of 2015 will be placed in the appropriate division in Tier 2 for 2016.

The 10th placed team in WEPL Premier 2 at the end of 2015 will be placed in the appropriate division in Tier 3 for 2016.

4. Placing of 1st XI Tier 3 teams

Teams in the WEPL Bristol/Somerset and Gloucestershire/Wiltshire divisions in 2015 will be placed in order of their finishing position – the 1st place teams will be placed first, then 2nd place, then 3rd place, etc.

For 1st to 9th places, if there is space in the appropriate Tier 2 division, then the team will be placed into that division. If the Tier 2 division already has 10 teams, then the team will be placed into the appropriate Tier 3 division.

The 10th placed team in each Tier 3 division will be returned to the feeder league.

5. Placing of 1st XI Tier 4 teams

Teams in the WEPL Bristol, Somerset, Gloucestershire and Wiltshire divisions in 2015 will be placed in order of their finishing position – the 1st place teams will be placed first, then 2nd place, then 3rd place, etc.

For 1st to 9th places, if there is space in the appropriate Tier 3 division, then the team will be placed into that division. If the Tier 3 division already has 10 teams, then the team will be returned to the feeder league.

The 10th placed team in each Tier 4 division will be returned to the feeder league, to be placed in their second division (Tier 5).

6. Special Cases

There are a number of specific situations which are unlikely but possible, that the above does not cover fully. These are detailed below.

Tied Places

Due to the fact that Frenchay 1st XI are currently playing in the Gloucestershire/Wiltshire Division, but will be playing as a Bristol team in 2016, it may be that they and a team in the Bristol/Somerset Division are to be placed at the same time, but there is only one space remaining in the Tier 2 Bristol/Somerset Division for 2016. In this case, the team which attained the most points in 2015 will be placed in Tier 2, and the other team will be placed in Tier 3. If the teams are also tied on points, then the standard WEPL tiebreakers will be used to determine which team is placed in Tier 2 for 2016.

A similar situation also applies for Chipping Sodbury, who are in the Gloucestershire Division for 2015, but will be playing as a Bristol team in 2016. The same method will be used in this case.

Two teams in Tier 3

It is possible that a club will have both its 1st XI and 2nd XI placed in Tier 3 for 2016. If this occurs, then when the 1st XI is placed into Tier 3, the 2nd XI will immediately be removed. The 2nd XI will be returned to the feeder league, but to be placed as if they are a returning 1st XI. The space in Tier 3 vacated by the 2nd XI will be taken by the next 1st XI to be placed.

It is only possible for this situation to arise for Ashcott & Shapwick, Keynsham, Swindon and Thornbury.

Inverted Teams

It is possible that a club will have its 1st XI placed in Tier 4, and its 2nd XI placed in Tier 3. If this occurs, then once the placings of all teams has been fully resolved, the 1st XI and 2nd XI of the club will be swapped, placing the 1st XI into Tier 3 and the 2nd XI into Tier 4.

It is only possible for this situation to arise for Swindon.

Too Many Tier 3 Teams

It is possible that there will not be enough places in the new Tier 3 to place all existing Tier 3 teams. In this case, the Tier 3 teams which cannot be placed in Tier 3 for 2016 will be returned to the feeder league, along with all teams from Tier 4 in this stream.

It is only possible for this situation to arise in the WEPL Bristol Division.

Insufficient Teams

It is possible that after placing all WEPL teams, that there will be a small number of spaces remaining in one or two of the Tier 3 divisions for 2016. In this situation, the spaces will be filled with the top sides from the feeder leagues.

It is only possible for this situation to arise in the Somerset, Gloucestershire and Wiltshire divisions.

Failure to Meet Non-Playing Criteria

It is possible that the above process will specify that a team is to be placed into a division for which it does not meet the non-playing criteria for that division. In this situation, the team will instead be placed into the highest division for which it does meet the non-playing criteria.

7. Streams

The following table shows the streams in which each WEPL club will be placed in 2016.

Bristol	Somerset	Gloucestershire	Wiltshire
Bath	Ashbrittle	Apperley	Biddestone
Bedminster	Ashcott & Shapwick	Bourton Vale	Burbage & ER
Bishopston	Bishops Lydeard	Cheltenham	Calne
Brislington	Bridgwater	Cheltenham CS	Chippenham
Bristol	Butleigh	Dumbleton	Corsham
Bristol YMCA	Chard	Frocester	Devizes
BWI & Pheonix	Frome	Gloucester A.I.W	Goatacre
Chew Magna	Glastonbury	Gloucester City Winget	Great Bedwyn
Chipping Sodbury	Ilminster	Hatherley & Rdgs	Malmesbury
Claverham	Minehead	Lechlade	Marlborough
Clevedon	North Perrott	Lydney	Marshfield
Congresbury	North Petherton	Painswick	Potterne
Downend	Staplegrove	Rockhampton	Purton
Frenchay	Street	Stroud	Swindon
Keynsham	Taunton	Tewkesbury	Trowbridge
Knowle	Taunton Deane	Woodmancote	Warminster
Lansdown	Taunton St Andrews		Westbury & District
Midsomer Norton	Uphill Castle		Winsley
Old Bristolians	Wellington		
Westbury	Wembdon		
Portishead	Weston S Mare		
Shirehampton			
Stapleton			
Thornbury			
Twyford House			
Winterbourne			